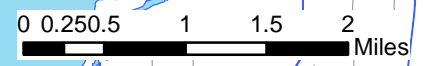
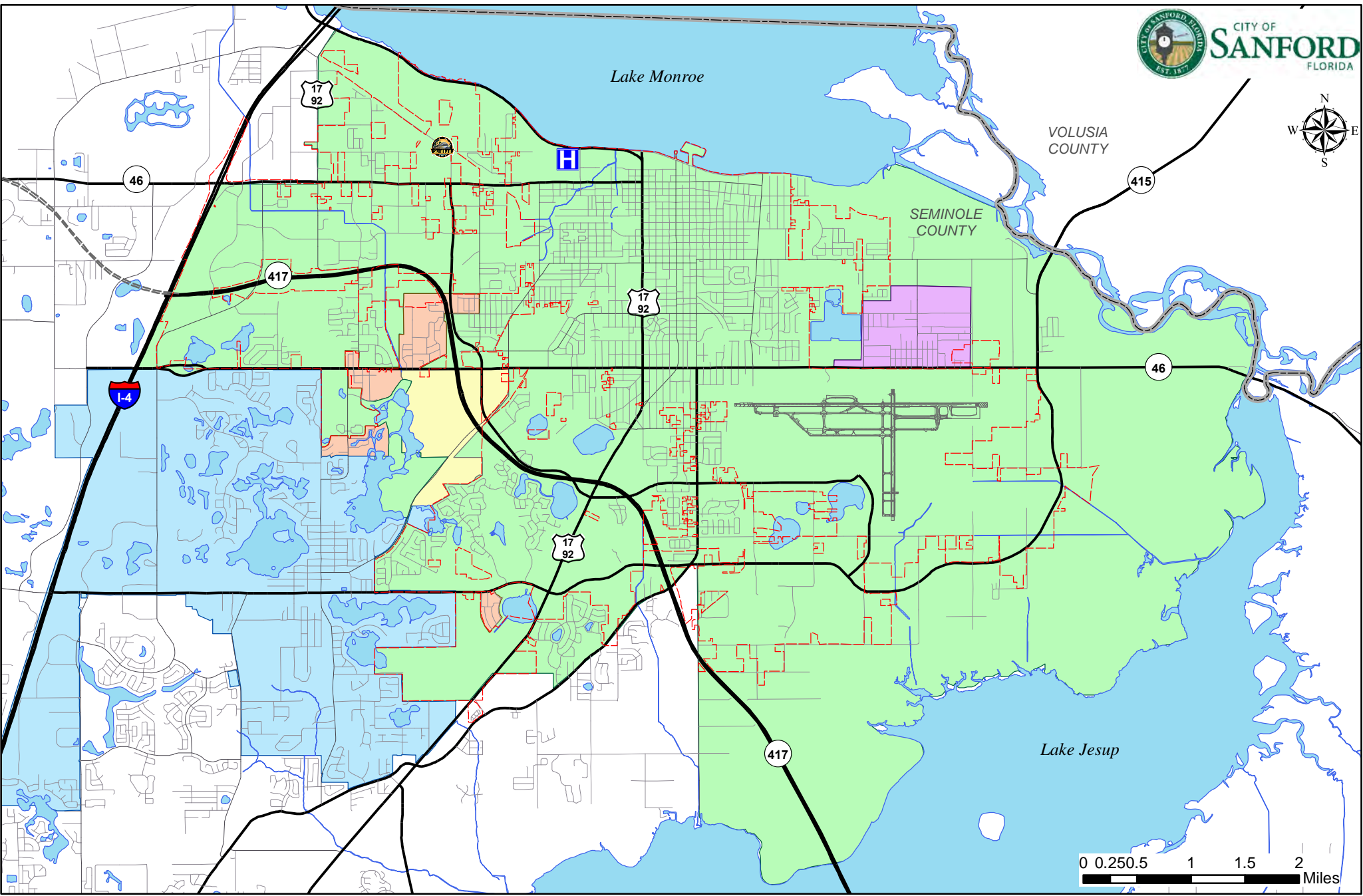
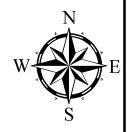


Infrastructure

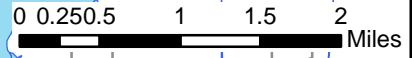
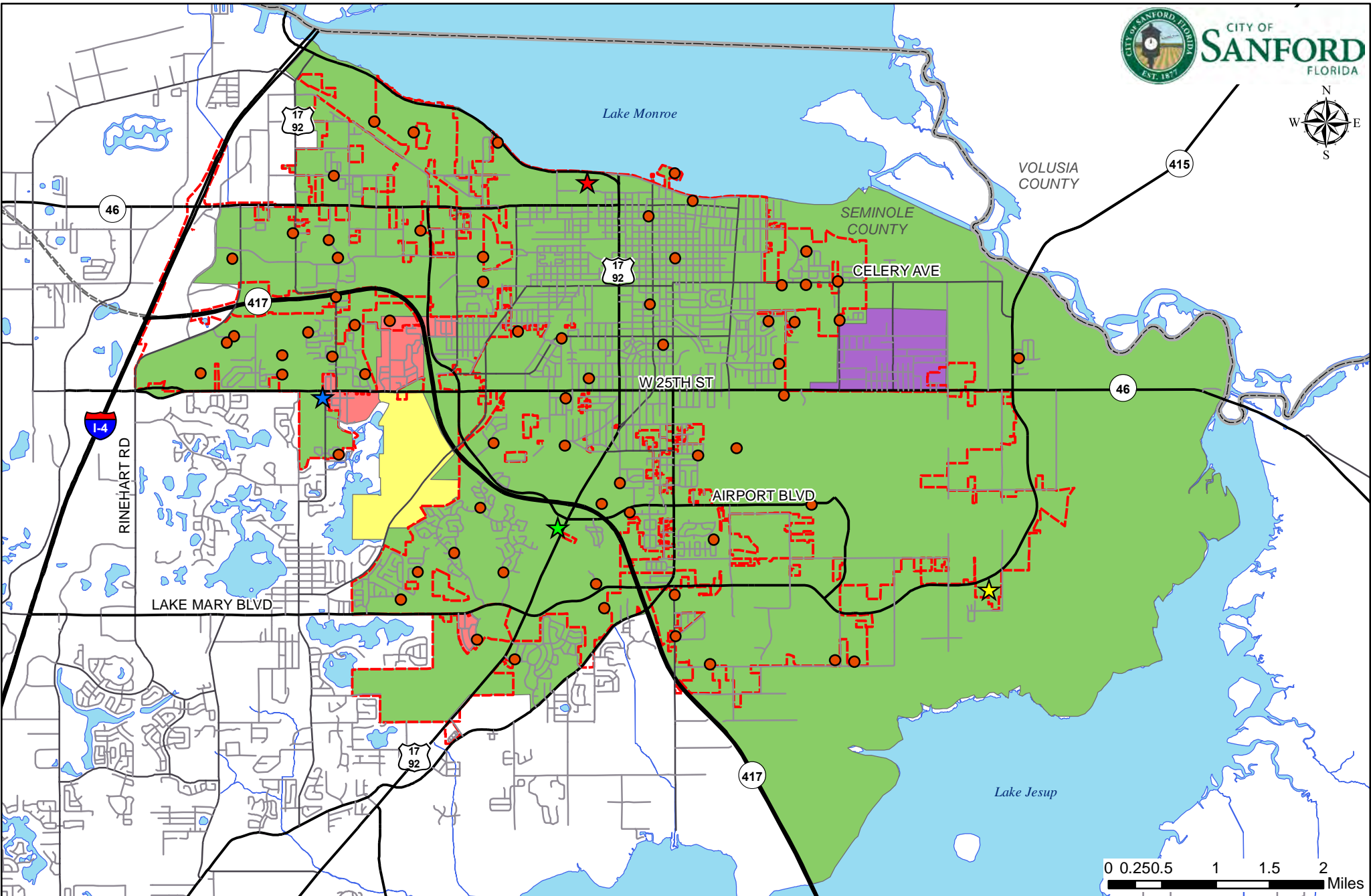
- MAP 32. *Potable Water Service Area, 2017*
- MAP 33. *Wastewater Service Area & Facilities, 2017*
- MAP 34. *Drainage Basins, 2017*
- MAP 35. *Solid Waste Collection Area & Facilities, 2017*
- MAP 36. *Aquifer Recharge, 2017*



- City of Lake Mary
- Seminole County Utilities
- Sanford City Limits
- City of Sanford
- Utilities, Inc.
- Midway Canaan Utilities
- County Boundary

Sanford Potable Water Service Area

Map 32



- | | | |
|-----------------------------------|---------------------------------|----------------------|
| Water Treatment Facilities | Waste Water Service Area | Lift Stations |
| City of Sanford Auxiliary WTP | City of Sanford | Lift Stations |
| City of Sanford Main WTP | Midway Canaan Utilities | Sanford City Limits |
| North Water Reclamation Facility | Seminole County Utilities | County Boundary |
| South Water Resource Center | Utilities, Inc. | |

Wastewater Service Area & Facilities

Map 33



VOLUSIA COUNTY

415

SEMINOLE COUNTY

CELERY AVE

W 25TH ST

46

AIRPORT BLVD

LAKE MARY BLVD

RINEHART RD

17 92

17 92

17 92

417



Drainage Basins

Lake Jesup

Lake Monroe (L-S Canal)

Midway

Sanford

Soldiers Creek

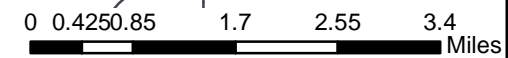
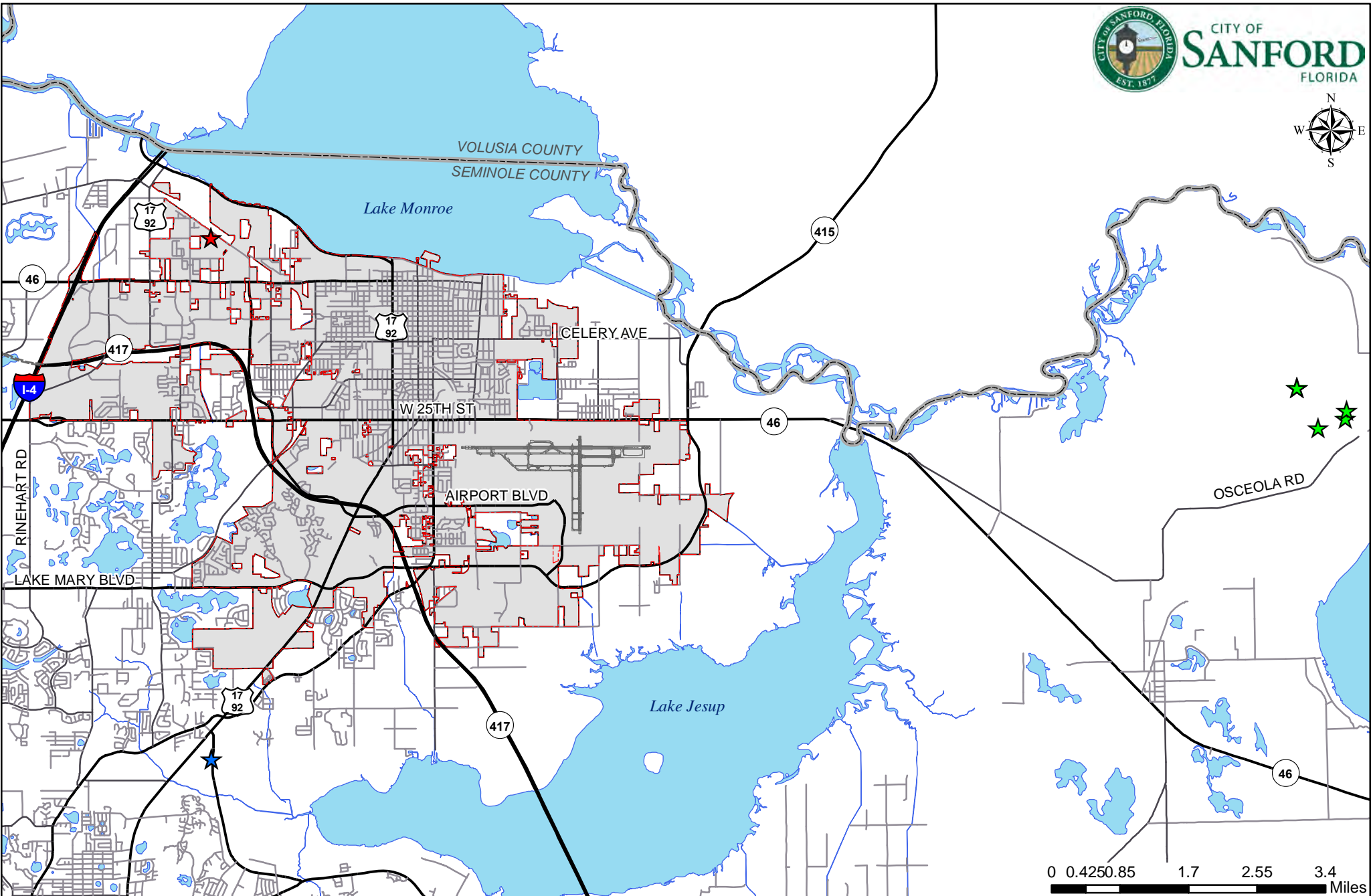
Yankee Lake

Sanford City Limits

County Boundary

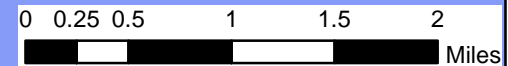
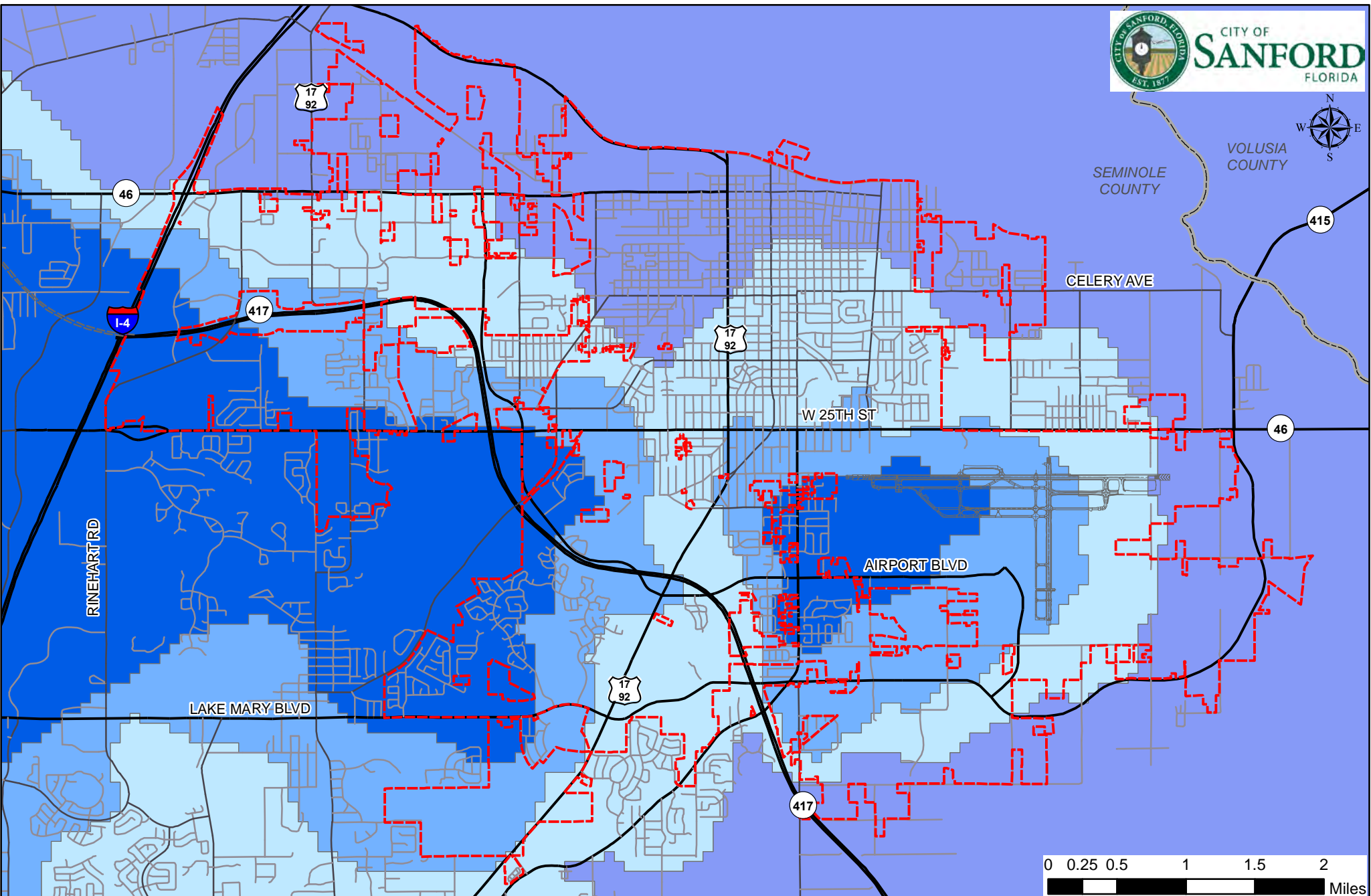
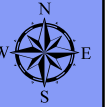
Drainage Basins

Map 34



- ★ Osceola Road Solid Waste Management Facility
- ★ Sanford Recycling & Transfer Station
- ★ Seminole County Central Transfer Station
- Solid Waste Collection Area
- Sanford City Limits
- County Boundary

Solid Waste Collection Facilities Map 35



Recharge Rates

- Low
- High
- County Boundary
- Medium
- Discharge
- Sanford City Limits

Aquifer Recharge Rates

Map 36

Source: Upper Floridan Aquifer Groundwater Recharge, 2015 (SJRWMD)